



THE COMPANY

Specialized in the distribution of PV modules, kits and components, Mprime focuses on flexibility, excellence in service and continuous technological innovation, in order to provide our clients all over the world with the best portfolio, service and warranties. Part of Martifer Solar, MPrime benefits from a wide international experience in solar photovoltaic installations.

SMARTROOFING PITCH ROOF SOLUTION

MPrime Smartroofing Pitch Roof Solution has been designed for the installation of tilted modules on rooftops. The material used is stainless steel for the hooks and anodized aluminum for the profiles and it is especially adapted to aggressive environment including maritime one. The safe installation on rooftop is guaranteed by the correct anchoring between the hooks on the roof. It is adapted for the use of independent modules systems.

ADVANTAGES

- Suitable for all pitched roofs
- Pre-assembled components for an easy and fast installation
- No damage on the waterproofing roof coverage or roof membrane
- Light and resistant Kit structure
- Optimization of roof space due to wide range of installation options

WARRANTY

- Limited warranty 10 years.

We recommend the use of this structure with the MPrime modules, certified by:



COMPONENTS

DESCRIPTION	IMAGE
TRANSVERSAL PROFILE MTS C / M 4.15 ANODIZED	
TRANSVERSAL PROFILE MTS C / M 2.1 ANODIZED	
MIDDLE CLAMP	
END CLAMP	
SCREW DIN912 M8x35 A4	
HAMMER NUT M8 A4	
PROFILE COVER	
ADJUSTABLE HOOK INOX 304	
CONNECTOR 40x40x2 C/0.35 M	
HAMMER HEAD SCREW M10/25 A4	
NUT DIN6923 M10 INOX A4	



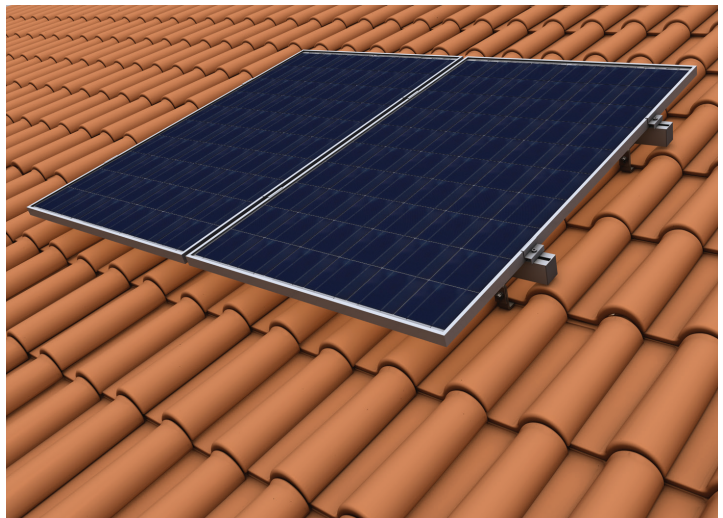
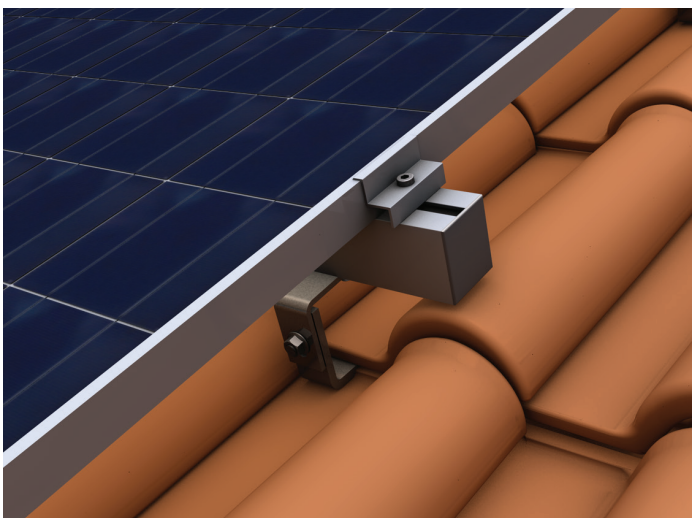
The purpose of the set of pieces is to fix the support profiles of the modules to the cover.

These parts fix the modules between them and to the transversal profile.

These parts fix the end of modules to the transversal profile.

Aluminium profile to connect hooks, clamps and support modules.

STRUCTURE



CAUTION: read safety and installation instructions before using the product. (available in WWW.MPRIMESOLAR.COM).

DISCLAIMER: specifications included in this datasheet are subject to change without notice from the company. In case of any conflicts/problems that may arise due to misinterpretation, prevailing conditions are the ones described in the original version (in English).

MPRIME SOLAR SOLUTIONS, S.A. ZONA INDUSTRIAL, APARTADO 17 / 3684-001 OLIVEIRA DE FRADES, PORTUGAL
TEL. +351 232 811 381 FAX. +352 232 767 750 E. INFO.PT@MPRIMESOLAR.COM WWW.MPRIMESOLAR.COM

